



BJS
SECURITY

TT geo eagle system Geo datalogger



The TempTale® GEO Eagle datalogger is a new system to erase hidden information about your shipment when travelling. It is a cost-effective, real-time, temperature monitor that transmits time, temperature, and location data back to the shipper. Easy to integrate into any shipment protocol, you only have to initiate a shipment, start the monitor, position it inside the load, and forget it actionable data is automatically transmitted to email or text messaging, or just a serial number entry away. And then, you can : save in-transit loads, understand route performance, reduce rejected loads and product loss.

KEY FEATURES AND BENEFITS

- Simple activation, easily integrates into shipper's protocol
- Tactile button initiation gives clear LED direction for monitor status
- Light sensor for evidence of door opening, and possible temperature compromise
- Supports temperature accuracy to +/- 0.5°C
- Simply initiate a shipment, start the monitor, place it on a load, and view shipment condition via serial number look-up
- 90 day battery shelf life supports localized inventory management
- No-worry returns : recycling encouraged, yet no penalties for unreturned monitors
- Track shipments via SensiWatch Tracks, a newly created web-based portal designed to enable viewing shipment data privately or publicly through serial number view. Shipment originators determine who sees what
- Trip details viewed via map display that includes detailed temperature data

information & contact

Mail : contact@bjservicesisolation.com
Tél : 00 (33) 235 411 002
43 rue des Drapiers
76600 Le Havre, FRANCE



BJS
SERVICES

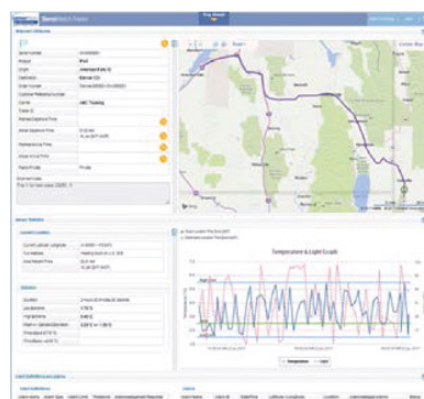
www.isolationconteneurs.com

TT geo eagle system

Geo datalogger

TT GEO EAGLE SYSTEM SPECIFICATIONS	
Sensor Types	Temperature, Light
Temperature Range for Storage	-20°C to +55°C (-4°F to +131°F)
Temperature Measurement Range	-20°C to +55°C (-4°F to +131°F)
Environmental Rating	IP64
Temperature Accuracy Range	NIST® traceable: ± 1.0°C from -20°C to -10°C (-4°F to +14°F) ± 0.5°C from -10°C to +45°C (+14°F to +113°F) ± 1.0°C from +45°C to +55°C (+113°F to +131°F)
Temperature Resolution	0.1°
Light Sensor	0-400 lux
Temperature Measurement Responsiveness	Meets the requirements of USP 1118 and EN12830
Start Up Delay	Optional 5 minutes to 12 hours, in 5 minute intervals
Cellular Communications	Global Quad-band GSM (850, 900, 1800, 1900 MHz), GPRS data
Location Method	Cellular-based location
Data Logger Memory Type	Non-volatile EEPROM
Battery Type	High Capacity Internal Lithium Battery; Shelf Life: 90 days
Battery Life/Reporting Interval	15 minute reporting interval: Operating duration 7 days continuous 30 minute reporting interval: Operating duration 17 days continuous 60 minute reporting interval: Operating duration 26 days continuous
Temperature Sampling Interval	Variable from 5 minutes to 2 hours; factory configurable
Housing	UL 94-V0 flame retardant plastic
Dimensions	101 mm x 65 mm x 29 mm
Weight	280 gr (10 oz)
Certifications	FCC; CE; RoHS; WEEE; IEC standard EN61000-4-2 Level 4 EN61000-6-3:2007+A1:2011; EN61000-6-1:2007+A1:2007 RTCA/DO-160: Section 20 – RF Susceptibility (Radiated) – Category S and Section 21 Emissions of RF (Radiated) – Category M and H.
Device Interface	STATUS and START push buttons; STATUS and ERROR LEDs
Real-Time Software Interface	Web based portal: SensiWatch™ Tracks 3.4 Email notifications

Serial Number Tracking



Trip Detail View

Map View



Shipment ID	Status	Product	Origin	Destination	Other Details
1000000001	Shipped	Grapes	Miami FL	Honolulu HI	Order Number: 33323322
1000000002	Shipped	Grapes	Miami FL	Honolulu HI	Order Number: 33323322
1000000003	Shipped	Grapes	Miami FL	Honolulu HI	Order Number: 33323322
1000000004	Shipped	Grapes	Miami FL	Honolulu HI	Order Number: 33323322
1000000005	Shipped	Grapes	Miami FL	Honolulu HI	Order Number: 33323322

Directory View